

THE ENERGY CRISIS

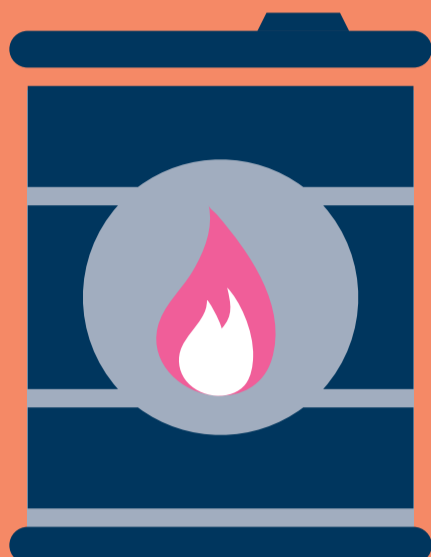
WHAT'S HAPPENED?

In April, energy prices went up by 54%. This affected everyone.

In October, prices will go up again! We may see our bills at twice as much as they were last year.

Why?

Global wholesale gas prices are very high and as gas is used to make much of our electricity, these prices are shooting up too. The war in Ukraine is causing gas and oil prices to go up further still.



AVAILABLE SUPPORT

All homes will automatically receive a **£400 energy bill payment or top up credit in October**. This is a grant and will not have to be paid back.



In April-June 2022, all households who pay council tax by direct debit and live in band A-D will automatically receive a **£150 energy bill council tax rebate**. People exempt from council tax or who pay when they get the bill, will receive a letter advising how to apply for the payment. You are eligible even if you are exempt from paying some or all of your council tax!

£650 "cost of living" automatic payment to those receiving means tested welfare benefits. Two payments of £325 will be paid into bank accounts in July and the Autumn.

£300 "pensioner cost of living" payment will come as a top-up to annual Winter Fuel Payments in November/December.

£150 "disability cost of living" payment for people receiving disability benefits. Paid in September.

Extra financial support will be available to people on means tested benefits through the council's Household Support Fund. This has now opened. Apply straight away as the money will go quickly!

Apply for the **£150 Warm Home Discount** with your energy company. The eligibility criteria is likely to include more people this year so check if you're eligible, even if you weren't in previous years.

WHAT CAN I DO?

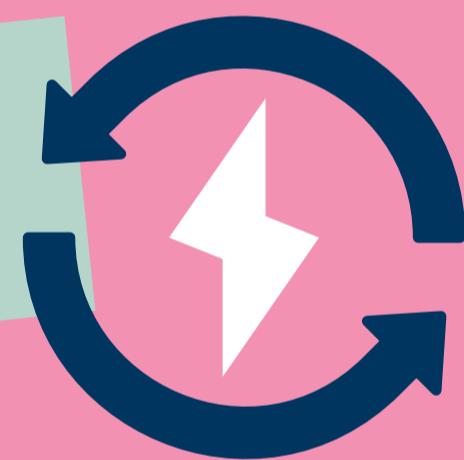
EASY WINS

USE LESS ENERGY

CO₂

The best way to reduce the impact of the rising prices is to use less energy in the first place. Things that use heat are expensive. **Using these things for a shorter time or at a lower temperature** can help, like having shorter showers and washing at lower temperatures.

CONSERVE THE HEAT YOU USE



Reduce heat in unused rooms and keep your main living spaces cosy by closing doors and draught proofing. Make sure your immersion heater isn't on all the time and that it is covered with an insulation jacket. Ensure your hot water pipes are lagged.

LOOK AT YOUR BILL



Do you have an Economy 7 tariff with different rates for day and night? If you don't use a lot of electricity during the night, then ask your supplier whether it would **save you money to switch to a single rate tariff**.

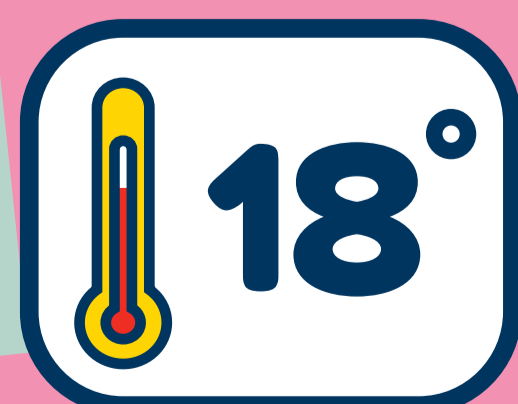
KNOW HOW MUCH ENERGY YOU USE



SMART meters tell you the cost of the energy you use. They also ensure your bills are accurate.

You can ask your supplier for a SMART meter or, if you don't want one, Energise Sussex Coast can provide you with a free electricity monitor. **Use your monitor to work out how much your appliances cost you.**

TURN DOWN YOUR THERMOSTAT



A healthy temperature for your home is between **18-21°C**.

Every degree you turn down your thermostat will save approximately £120.

THE BIG STUFF



There has never been a better time to invest in **energy efficiency measures**. High energy prices mean the payback time for these measures will be much shorter.

SOME ENERGY EFFICIENCY MEASURES AND THEIR SAVINGS



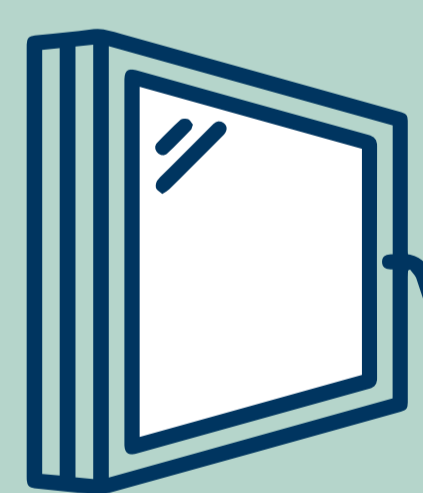
LOFT INSULATION

Loft insulation will cost around £300 but you'd save an average of £210 a year, making the payback time between 1-2 years.



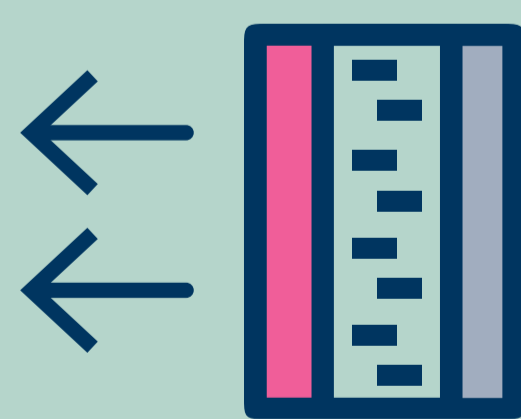
SWITCH TO LED BULBS

They can pay for themselves in as little as 4 months!



SECONDARY GLAZING

Much cheaper than double glazing, you can save more than £75 a year.



CAVITY WALL INSULATION

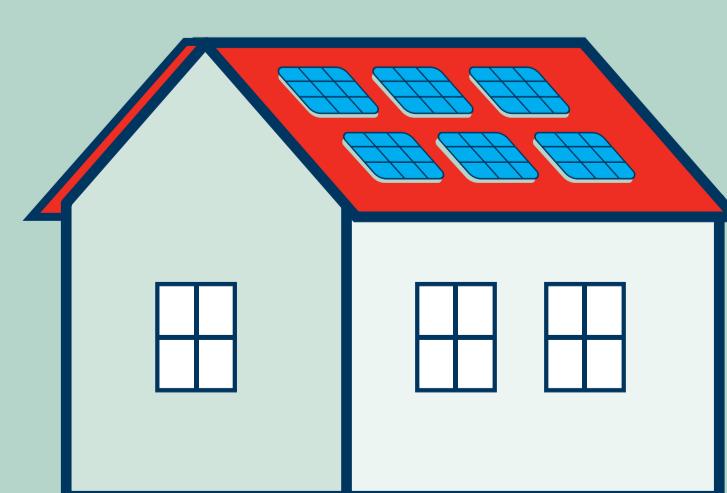
An average installation cost of £456 could save you £155 a year.

FUNDING



There is government funding available to help install energy efficiency measures. **Talk to an Energise Sussex Coast advisor for more information.**

MAKE YOUR OWN POWER!



If we can **turn our homes into mini power stations** by putting solar on the roof, this will have long term positive impacts for your energy bills.